

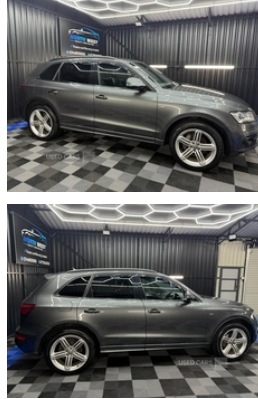


Yard 1 Knockroe Business Park, Strabane, BT82 9QR  
Martin: 02872002013 | Shaun: 02872002013

## Audi Q5 2.0 TDI Quattro S Line Plus 5dr S Tronic | Feb 2015

MINT EXAMPLE FINANCE AVAILABLE

# £11,450



Audi Q5 Quattro 2.0tdi S-line plus

own this tidy Audi Q5 for as little as £57 per week. To apply for a personal finance quote click link below. Just follow these 3 simple steps

1. Go to our showroom
2. Click on vehicle you are interested in
3. Go to apply now

2015

mot July 25

111k motorway miles

Black edition Styling

Auto

Dab

Sat nav

Full black leather Heated

cruise control

Privacy Glass

Electric boot

Sat nav

Air con

Alloys

Timing belt done

Service history

Mint condition inside and out

Car will come

Fully Serviced

Fully valeted

Full health check

All paperwork completed by us

3 months warranty

Excellent exchange rate on euro

<b>Miles:</b>	111500
<b>Fuel Type:</b>	Diesel
<b>Transmission:</b>	Semi-Automatic
<b>Colour:</b>	Grey
<b>Engine Size:</b>	1968
<b>CO2 Emission:</b>	159
<b>Tax Band:</b>	G (£265 p/a)
<b>Body Style:</b>	Sport utility vehicle
<b>Insurance group:</b>	25E
<b>Reg:</b>	VHZ2389

## Technical Specs

### DIMENSIONS

<b>Length:</b>	4629mm
<b>Width:</b>	1898mm
<b>Height:</b>	Not Availablemm
<b>Seats:</b>	5
<b>Luggage Capacity (Seats Up):</b>	540L
<b>Gross Weight:</b>	2430KG
<b>Max. Loading Weight:</b>	610KG

### PERFORMANCE & ECONOMY

<b>Fuel Consum. (Urban Cold):</b>	41.5MPG
<b>Fuel Consum. (Extra Urban):</b>	50.4MPG
<b>Fuel Consum. (Combined):</b>	47.1MPG
<b>Fuel Tank Capacity:</b>	75L
<b>Number Of Gears:</b>	7 SPEED
<b>Top Speed:</b>	124MPH
<b>Acceleration 0-100 km/h:</b>	9s
<b>Engine Power BHP:</b>	174.3BHP

All Major credit/Debit cards

Delivery can be arranged Nationwide

Viewing 6 days a week with indoor viewing available in evenings.

Saturday appointments only

Yard 1

knockroe business park

strabane

BT82 9QR

Shaun 07448005800

Martin 07725163525

£11450

## **Vehicle Features**

3 point seatbelts on all seats, 3 rear headrests, 3 zone climate control, ABS, Acoustic windscreen, Aluminium sill plates, Aluminium window surround, Audi music interface, Auto dimming rear view mirror, Body colour bumpers, Chrome door handles and boot strip, Chrome exhaust tailpipe, Chrome fog light surround, Concert radio/single CD player with MP3 facility, DAB Digital radio, Diesel particulate filter, Driver and passenger airbags, Driver and passenger side airbags, Driver information centre with colour display in instrument panel, Electrically adjustable and heated door mirrors, Electric pack A - Transporter, Electromechanical parking brake, ESP, First aid kit, Front and rear electric windows, Front centre armrest with 12v socket, Front fog lights, Front passenger airbag deactivation, Front sports seats including electric lumbar support, Headlight washers, Height adjustable driver's seat, High gloss black grille, Hill descent control, Isofix front passenger and rear seat preparation, Light and rain sensor for auto activation of lights and windscreen wipers, Locking wheel bolts, MMI - Multi Media Interface control system, Platinum grey rear diffuser, Privacy glass, Reach + rake adjustable steering column, Rear acoustic parking system, Rear spoiler, Rear wiper, Remote central locking, Remote electric boot opening/closing, Service interval indicator, Servotronic speed related PAS, S Line body styling, Split fold rear seat, Thatcham category 1 alarm + immobiliser, Towbar preparation, Traction control, Tyre pressure monitor, Tyre repair kit, Warning triangle, Xenon headlights with LED running lights